

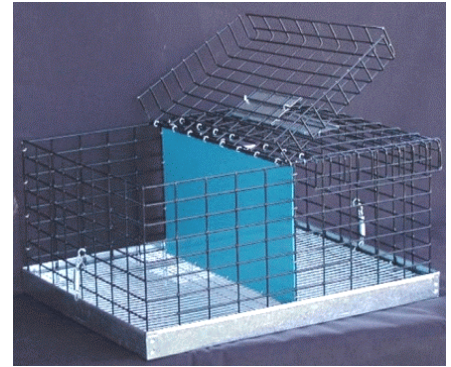
# CARRIERS

## C-SERIES DELUXE BLACK VINYL COATED WIRE HAULING CAGES *TRANSPORT YOUR RABBITS IN COMFORT AND SAFETY!*

Each carrier includes pan, pan springs, door(s), & card holder(s). **Handles & Door Locks Sold Separately!**

### Ordering Instructions:

- Determine the style of carrier you want and its Base Stock Number.
- Select from one of the three styles of dividers available:
  - Code W:** Wire Dividers. High-quality 1/2" X 1", 16-gauge galvanized after wire dividers. Wire dividers allow maximum air flow.
  - Code P:** Blue Polyethylene Solid Dividers. These attractive dividers are easily cleaned, never rust, and provide maximum protection from adjacent rabbits.
  - Code M:** Perforated Galv. Metal Dividers. The perforations allow some air flow.
- Combine the divider code with the Base Stock Number to create the Stock Number, such as C10P for a two-compartment carrier for giant breeds with polyethylene dividers.



C02P

Save \$\$\$ with our **Quantity Discount: 5% off on 6 or more carriers of any one model.**  
We also make custom-ordered carriers. Call for details and pricing.

Compartments	Dimensions (in.)				Floor	Pan Ht.	Size of Recommended Breeds	Base Stock No.	Price Each			Ship. Wt. (lbs)
	D	L	H	Compartment					CODE W Wire Div.	CODE P Poly Div.	CODE M Metal Div.	
1	8	16	9	8 X 16	1/2" X 1"	1 1/2"	Small & Medium	C01	\$17.40	--	--	6
2	16	20	9	10 X 16	1/2" X 1"	1 1/2"	Medium	C02	\$28.30	\$28.70	--	10
3	16	24	9	8 X 16	1/2" X 1"	1 1/2"	Medium	C16	--	\$35.20	--	12 (O.S.)
	16	28	9	(2) 10 X 16 (1) 8 X 16	1/2" X 1"	1 1/2"	Medium	C03	\$38.50	\$39.40	--	13 (O.S.)
4	16	28	9	8 X 14	1/2" X 1"	1 1/2"	Medium	C04	\$41.40	\$42.20	--	14 (O.S.)
	12	24	8	6 x 12	1/2" X 1"	1 1/2"	Small (Dutch, Tans, etc.)	C17	--	\$33.30	--	10
	16	20	8	8 X 10	1/2" X 1/2"	1 1/2"	Small (Dwarfs, etc.)	C18	--	\$36.40	\$35.40	11
6	16	28	8	(4) 8 X 10 (2) 8 X 8	1/2" X 1/2"	1 1/2"	Small (Dwarfs, etc.) Cavies	C19	--	\$46.90	\$45.30	14
8	18	24	8	6 X 9	1/2" X 1/2"	1 1/2"	Small (Dwarfs, etc.) & Cavies	C23	--	\$56.40	--	14
1	12	18	15	12 X 18	1/2" X 1"	2 1/2"	For GIANT Breeds	C09	\$24.80	--	--	10
1	12	24	15	12 X 24	1/2" X 1"	2 1/2"	For GIANT Breeds	C22	\$29.90	--	--	14 (O.S.)
2	18	24	15	12 X 18	1/2" X 1"	2 1/2"	For GIANT Breeds	C10	\$38.40	\$39.40	--	16 (O.S.)
3	18	36	15	12 X 18	1/2" X 1"	2 1/2"	For GIANT Breeds	C11	\$56.40	\$58.30	--	25 (O.S.)

### Economy Carriers With Galvanized-Before Welded Wire



C02E

Compartment	Size (in.)			Specifications	Stock No.	Price Each		Ship. Wt. (lbs)
	D	L	H			1-5	6+	
1	8	16	9	Standard	C01E	\$15.30	\$14.50	5
2	8	16	7	1/2" X 1/2" Floor & Divider	C05E	\$18.40	\$17.50	6
	16	20	9	Standard	C02E	\$23.20	\$21.95	9
3	16	28	9	Standard	C03E	\$31.20	\$29.60	11 (O.S.)
4	16	28	9	Standard	C04E	\$32.70	\$31.10	11 (O.S.)
2	18	24	14	2 1/2" pan	C06E	\$32.60	\$30.95	14 (O.S.)

O.S. = Oversized. UPS Dimensional weight regulations apply. Additional shipping charges may occur.